

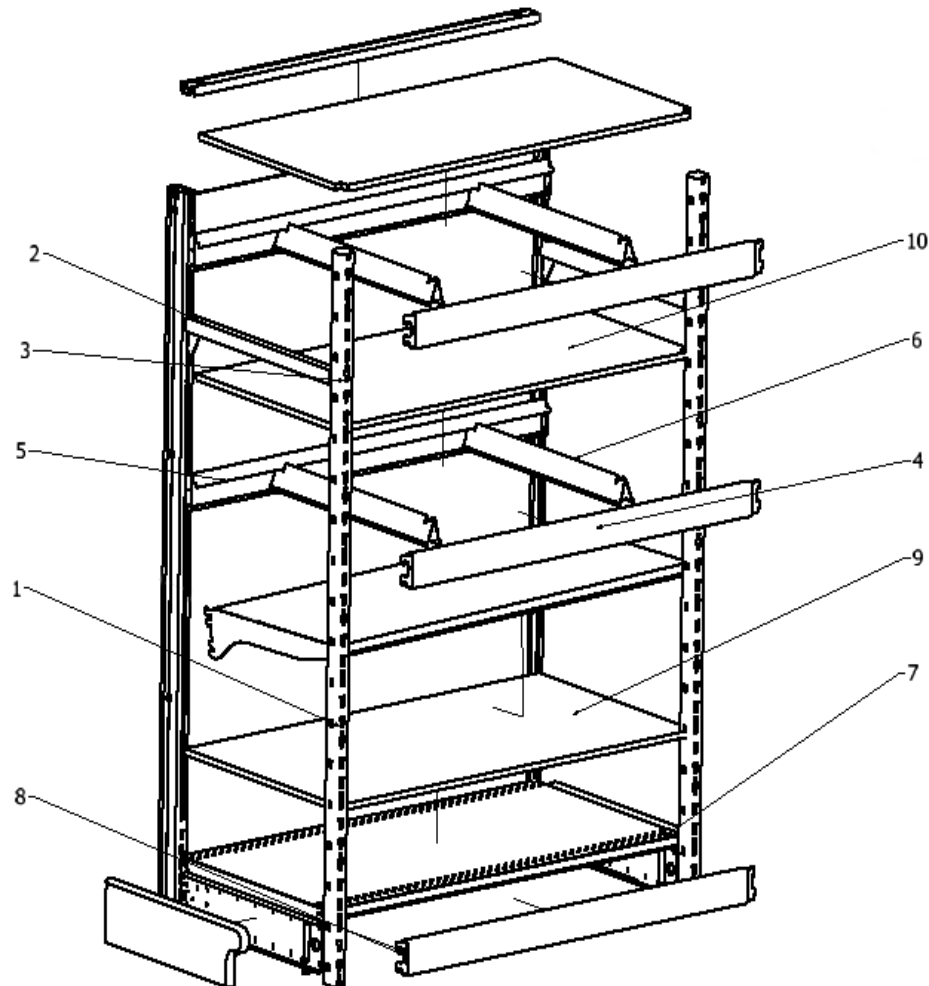


Kent UnLimited, Inc.

Ultra Span Shelving Installation Instructions

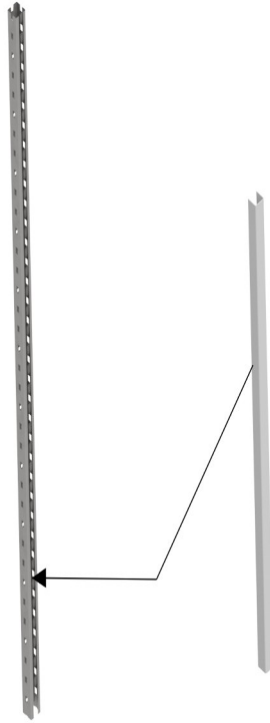


Ultra Span Shelving Installation Instructions



ITEM#	PART NUMBER	DESCRIPTION
1	USUXXX	ULTRA SPAN UPRIGHT
2	USUBXX	ULTRA SPAN UPRIGHT BRACE
3	USUBB	ULTRA SPAN UPRIGHT BRACE BOLT 5/16-18 X 2-1/2" HEX
4	USFBXX	ULTRA SPAN FRONT BEAM(HD AVAILABLE)
5	USRBXX	ULTRA SPAN REAR BEAM(HD AVAILABLE)
6	USDSXX	ULTRA SPAN DECK SUPPORT(HD AVAILABLE)
7	USBC	ULTRA SPAN BASE CONNECTOR
8	WSBC	BEAM LOCK CLIP
9	USDXXXX	ULTRA SPAN DECK
10	USSXXXX	ULTRA SPAN SHELF(HD AVAILABLE)

Ultra Span Shelving Installation Instructions

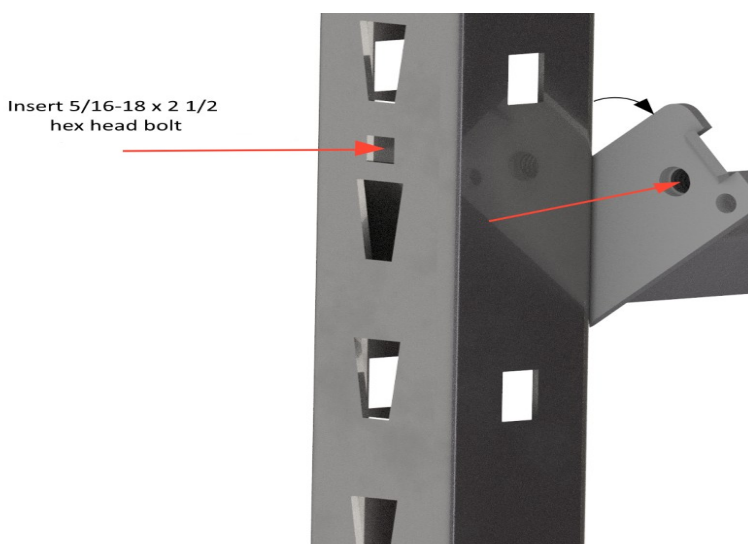


Ultra Span reinforced uprights are available to decrease upright damage from pallet carts and to increase the upright column loading.

Ultra Span reinforced uprights have a heavy gauge U shaped reinforcement channel welded in the lower section of the upright.

Upright Combination	Maximum Load Rating
KU Display Upright plus USU Standard Upright	4000 lbs
KU Display Upright plus USU-RE Reinforced Upright	8000 lbs

Ultra Span Upright Brace



To attach Ultra Span Upright Brace to the Ultra Span Upright, tilt the brace assembly, insert tab flange into rear C opening of the upright and rotate brace to vertical position.

Align threaded hole in upright brace front with first square hole from the top of upright and center the top lance tab between the rear upright flanges. Insert 5/16-18 x 2 slot head bolt through square hole of upright and into the threaded hole of upright brace front.

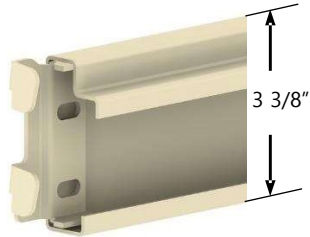
Tighten bolt to secure the assembly.



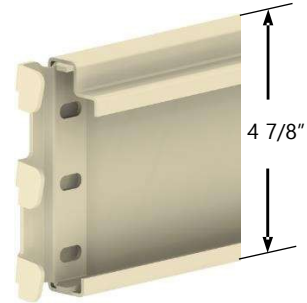
Ultra Span Shelving Installation Instructions

Ultra Span Beams

Before installing the remaining beams, make sure the Heavy Duty Beams (if required) are installed at levels desired for heavy duty application.



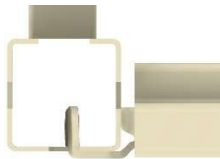
Standard Beam



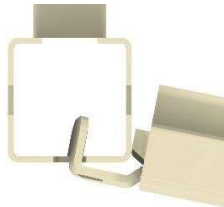
Heavy Duty Beam

Check section and make sure that:

- All beams are properly seated and square with Ultra Span Frames.
- Engagement hooks are shouldered to the bottoms of the upright slots.
- All front and rear beams for each tier are installed parallel to floor.
- Each set of beams for each level are the same height from the floor.



CORRECT: Beam is square with upright.

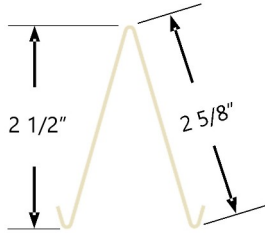


WRONG: DO NOT install beams out of proper alignment OR allow frames to be shifted out of alignment.

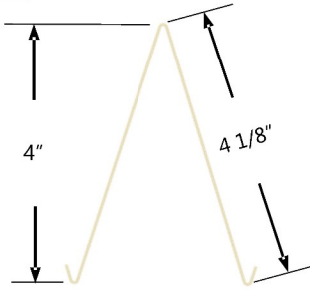


Ultra Span Shelving Installation Instructions

Shelf Supports



Standard



Heavy Duty

To install shelf supports, tilt support sideways, slant and insert between front and rear beam flanges. Position shelf support slots over beam flanges and rotate shelf support to vertical position.

- If outer support fit too tightly, install them toward center and slide them to proper space.

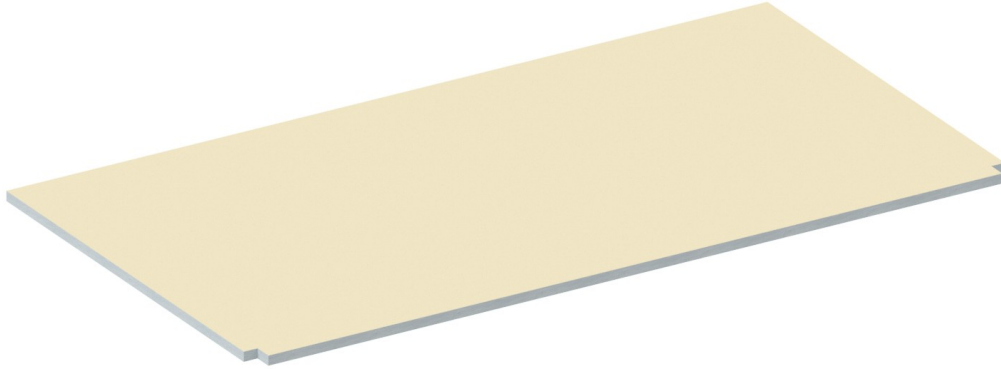


Each beam should have shelf supports located approximately 3" from the end frame and then additional supports spaced no more than 12" apart.

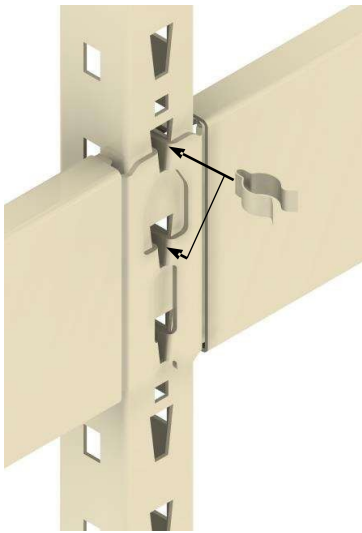
Shelf Supports	
Beam Size	Minimum Number of Supports
48"	5
60"	6
72"	7
96"	9

Ultra Span Shelving Installation Instructions

Ultra Span Shelves



Beam Lock Clips



- Beam Lock Clips are required for all Heavy Duty Beams, when hand stackers are used to load shelves.
- Beam Lock Clips prevent accidental or unintentional dislodging of beams and are recommended to be used.

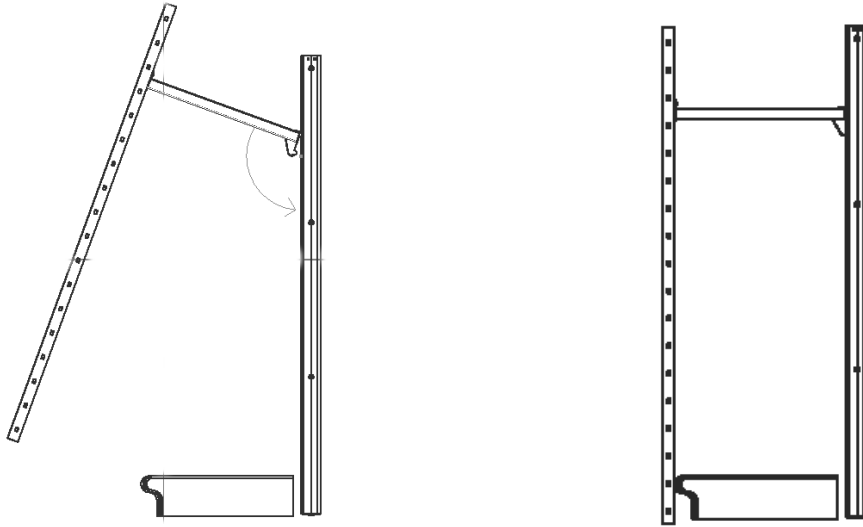
Lock Clips have rounded sides to match upright slots.

- Insert Lock Clip into the top space of the same slot of the upright above the top hook(s) of each beam. If the top slot is used on the upright, insert lock clip into space above second beam hook(s), in same slot of upright.



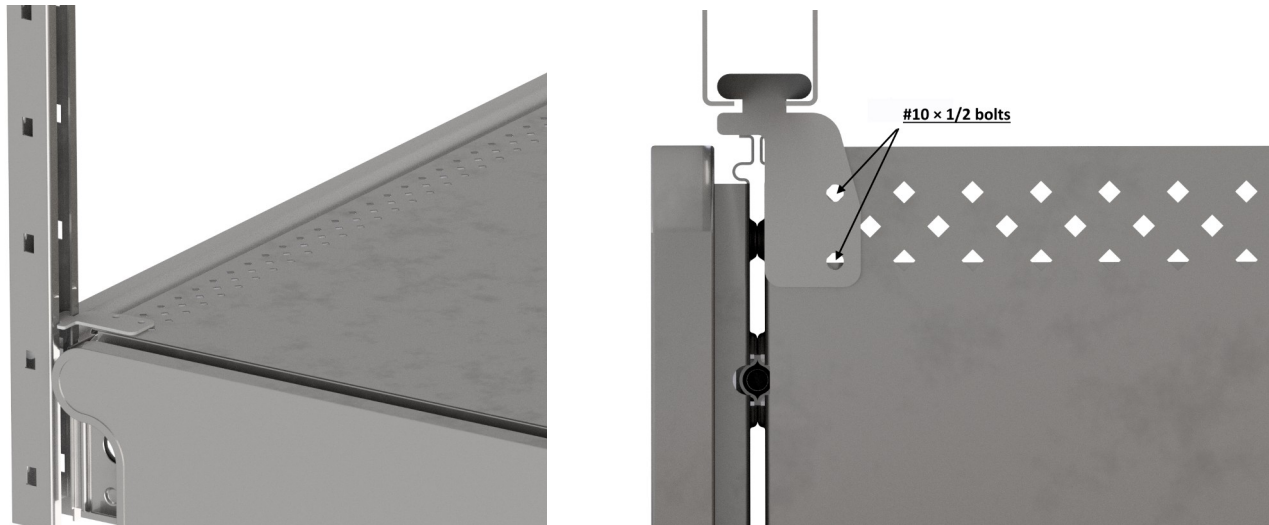
Kent UnLimited, Inc.

Ultra Span Shelving Installation Instructions



Tilt the Ultra Span Upright/Upright Brace assembly to engage upright brace bracket top hook into the 6th slot from the top of the display upright and rotate Ultra Span Upright to vertical position.
Adjust leveling bolt to floor.

Ultra Span Upright/ Base Connector



If base shelves are not perforated, perform the following instructions for each base connector bracket:

- 1) Measure 1 inch from edge of base shelf and pencil a line 1 inch parallel to base shelf edge.
- 2) Measure and mark a cross line 5/8 inch from top front of base shelf.
- 3) Measure and mark a cross line 1 5/8 inch from the front of the base shelf.
- 4) Drill two 1/4 inch diameter holes on marked cross lines.

Tilt Upright Base Connector, insert base connector front tab into lower rear section of Ultra span Upright and rotate to position with upright flanges engaged in base connector slots.

Place base connector in place, insert 2 each #10 x 1/2 bolts through base connector holes.

Raise front of base shelf, attach # 10 nuts to bolts and tighten before lowering the base shelf.

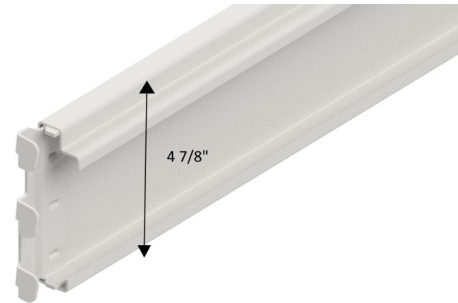
Ultra Span Shelving Installation Instructions

Ultra Span Beams

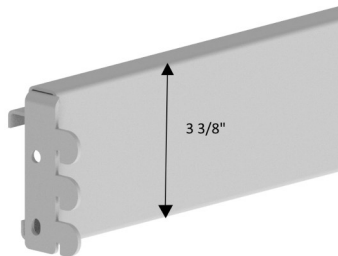
Front Beam



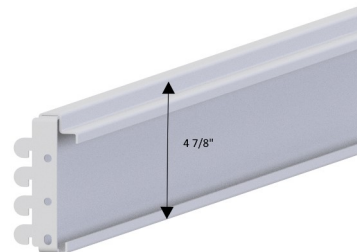
Front Beam Heavy Duty



Rear Beam



Rear Beam Heavy Duty



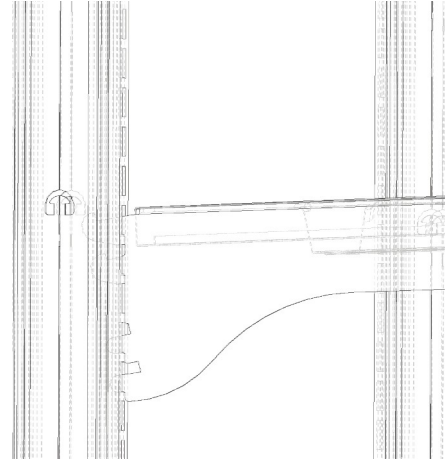
At least one set of Ultra Span beams must be installed at the top of each section for stability and to maintain proper Ultra Span upright spacing.

Rear beams are for the display shelving uprights and front beams are for the Ultra Span uprights.

Using the top upright slots, install a rear beam at the top of the display shelving section, then install a Ultra Span front beam on the Ultra Span uprights using the top upright slots.

Ultra Span Shelving Installation Instructions

Standard Shelving



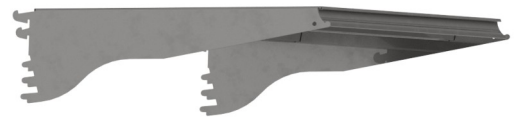
KSM Shelf
Standard

Ex* KHM(D*)LLWW



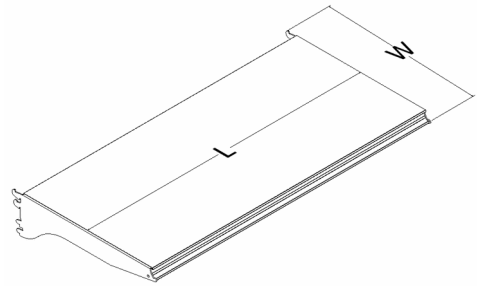
KHM Shelf
Heavy Duty

Ex* KHM(D*)LLWW

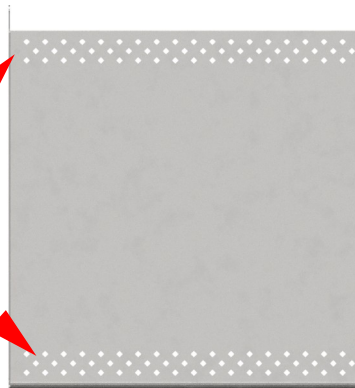


KTM Shelf
Trim Line

Ex* KHM(D*)LLWW



*(D) denotes a perforated shelf





Kent UnLimited, Inc.

Ultra Span Shelving Safety Precautions

1. Ultra Span must be installed level and properly.
 - Install strictly in accordance with manufacturer's instructions.
2. **Do Not** use Ultra Span as a ladder, work platform, or a walkway.
3. If any portion or component of Ultra Span rack becomes damaged, the rack must be unloaded and damaged components replaced immediately or before reloading rack.
4. **NEVER** use fork trucks to load or unload Ultra Span racks.
5. Hand load and unload **ONLY**.
 - Walk type stackers may **ONLY** be used with Heavy Duty Beams, Beam Lock Clips and Heavy Duty Wide Span Frames properly anchored.
 - Pallets must span and rest on front and rear beams.
6. **NEVER** exceed maximum distributed static load capacities.
 - Never drop weight onto shelves or beams.
 - Avoid concentrated loads. Loads other than evenly distributed loads can reduce the capacity by 50 percent.
7. Maximum upright assembly load is 10,000 pounds with beams spaced not more than 48 inches vertically on center and first beam set located at the lowest upright slots or all uprights anchored.
 - **CAUTION:** Center uprights carry 1/2 the load of opposing units.
8. Anchor Wide Span racks when the ratio of height versus the depth of the rack exceeds a 5:1 ratio.
9. Check Wide Span racks periodically for maintenance requirements.
 - Check for damage and insure shelving sections remain aligned.
10. Keep heavy loads at lowest possible position, to stabilize units.

Ultra Span Shelving User Instructions

POST IN A CONSPICUOUS PLACE

WARNING: Overloading, misuse or abuse of Wide Span system can contribute to collapse and personal injury .

- § Concentrated loads reduce capacity by 50%.
- § If any portion or component of the Wide Span rack becomes damaged, the rack must be unloaded and damaged components replaced before reloading for use.
- § Hand load ONLY, Fork trucks or mechanical equipment must NOT be used.
- § Walk type stackers may ONLY be used with Heavy Duty Beams, Beam Lock Clips, and Heavy Duty Wide Span Frames anchored.
- § Pallets must span and rest on front and rear beams.
- § Maximum upright assembly load of 10,000 pounds requires beams spaced not more than 48 inches vertically and first beam set located at the lowest upright slots. Anchor all uprights, if lowest slots are not used.

Maximum Evenly Distributed Static Load Capacities in Pounds					
(Using 5/8 in particle board shelf with proper shelf supports)					
Frame Depth	Beam Length	Number of Shelf Supports			
		2	3	4	5
18 – 36	48	1,000	2,000	2,000	2,000
18 – 36	60	2,000	2,500	2,500	2,500
18 – 36	72	1,800	2,000	2,000	2,000
18 – 36	96	1,600	1,600	1,600	1,600
42 – 48	48	1,200	1,800	2,400	2,400
42 – 48	60	1,200	1,800	2,400	2,400
42 – 48	72	1,200	1,800	2,000	2,000
42 – 48	96	1,200	1,600	1,600	1,600

Heavy Duty Beams

- § Heavy Duty Beams MUST have 3 or more shelf supports.
- § Maximum evenly distributed static load capacity for a pair of Heavy Duty Beams is 3,000 pounds (ALL Lengths).
- § Hand Stacker pallet load 1,000 pounds per pallet, two pallets per set of Heavy Duty Beams Maximum.

WARNING: These capacities are for evenly distributed loads; uneven or concentrated loads reduce these capacities 50 percent.

- **DO NOT** use Fork Lifts.
- Walk Type Stackers are ONLY to be used **WITH** heavy duty components, lock clips, and floor shims.



WALK TYPE STACKER:
ALLOWED with Heavy Duty components, locking clips, and floor anchors.

FORK LIFT:
DO NOT USE



Safety Precautions to insure Ultra Span is used safely:

1. DO NOT use Ultra Span as a ladder, work platform or a walkway.
2. NEVER overload uprights or beams. NEVER drop weight onto shelves or beams.
3. CORRECT dislodged beams, misalignment or any damage immediately.
4. Keep heavy loads on lowest possible level.